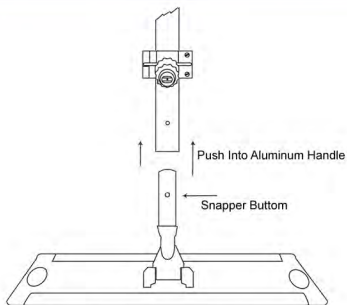


Assembly of Tool

Ultra Mop 22" & 20oz tank. FTA-500-22
 Ultra Mop 16" & 20oz tank. FTA-500-16
 Ultra Mop 22" & 30oz tank. FTA-530-22
 Ultra Mop 16" & 30oz tank. FTA-530-16



GB : Assemble the base plate onto the ALU handle.
 DE : Montieren des Mophalters an den ALUstiel.
 FR : Assemblez la plaque de base sur la poignée ALU.
 ES : Montaje de la placa base sobre la mango ALU.



GB : How to remove Microfiber Flat Mop after cleaning.
 DE : Entfernen des schmutzigen Micro Faser Bezuges.
 FR : Change le Microfiber Mop.
 ES : Reemplazar el Microfiber Mop.

GB: Instructions "ULTRA-MOP" System
 DE: Bedienungsanleitung fuer "ULTRA-MOP" System
 FR: Mode d'emploi du systeme "ULTRA-MOP" System
 ES: Modo de empleo sistema "ULTRA-MOP" System

Accessories/Parts

Pressurized Refill Tank 20oz/600ml



MDT21770120BL (blue)
 MDT21770120GR (green)
 MDT21770120BK (black)

20oz cleans up to 2000 sqft

Pressurized Refill Tank 30oz/900ml



MDT21770130BL (blue)
 MDT21770130GR (green)
 MDT21770130BK (black)

30oz cleans up to 3000 sqft

Accessories/Parts

Premium Multi-purpose Microfiber Flat Mop

(All Around)

FTA-10-22 22"
 FTA-10-16 16"

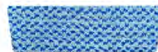


Extra strenght flat mop. Made from the finest micro fiber and designed for durability. Flat mop leaves a residual of disinfectant on floors to enhance "dwell time" while still providing excellent cleaning. Color blue.

Premium Scrubby Microfiber Flat Mop

(Tiles)

FTA-45-22 22"
 FTA-45-16 16"



Extra strenght flat mop with little scrubbies throughout the mop as to enhance cleaning on any surface, especially grouted floors. Made from the finest micro fiber and designed for durability. Color Blue.

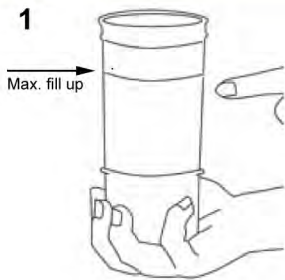
Instructions

Quick lock

Pressurizing

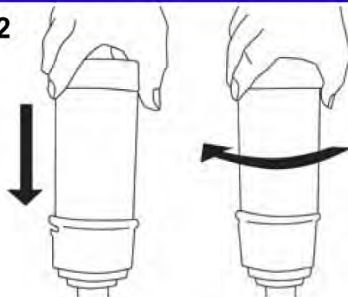
Maintenance

1



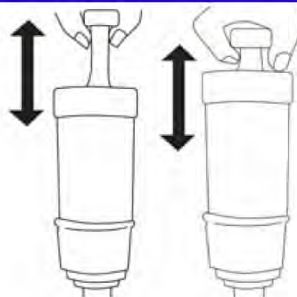
GB : Fill bottle and screw bottle lid on.
 DE : Füllen der Flasche und mit Deckel verschliessen.
 FR : Remplir le flacon et le fermer avec le couvercle.
 ES : Llene la botella y enrosque la tapa.

2



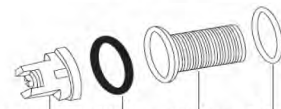
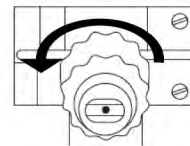
GB : Place the bottle into the holder
 DE : Einsetzen der Flasche in den Halter
 FR : Fixe le flacon sur le support
 ES : Coloque la botella en la copa

3



GB : Pressurize bottle by pumping (5-6 times).
 DE : Flasche mit 5-6 Pumphyben unter Druck setzen.
 FR : Pressuriser le flacon en actionnant le piston noir (5 ou 6 fois).
 ES : Presurizar la botella bombeando embolo de (5-6 veces).

Flush Tool Daily W/Warm Water



Spraynozzle Washer Strainer O-Ring

4



GB : Press the dispensing button to release the cleaning solution.
 DE : Durch drücken des Auslöseknopfes Reinigungsmittel freisetzen.
 FR : Appuyer sur le bouton pour libérer le produit sur le solution nettoyante.
 ES : Presione el boton dosificador para aplicar la solución en el suelo.

5

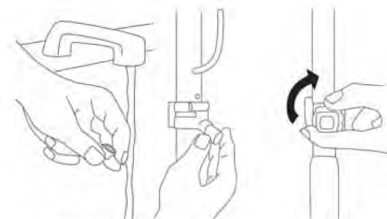


GB : Clean the floor and dispense the cleaning solution as required
 DE : Reinigen des Bodens. Bei Bedarf zusätzliches Reinigungsmittel aufbringen.
 FR : Nettoyer le sol. Libérer plus de produit si nécessaire
 ES : Limpiar el suelo. Dosificar la solución según requiera

6



GB : After you are finished with cleaning always release the pressure.
 DE : Nach dem Reinigen immer den Druck aus der Flasche lassen
 FR : Apres nettoyage touher librer le pression on le flacon
 ES : Después de que haya terminado con la limpieza siempre libere la presión de la botella



GB : Cleaning of Spray system
 DE : Reinigung der Spruehduese
 FR : Nettoyage du Systema de erogation
 ES : Limpieza del pulverizador

FAS-TRAK
 Innovative Performance Solutions
 PO BOX 757, Monee IL 60449-0757
www.fastrakind.com