

FAS-TRAK TESTIMONIALS



"We spend much less time applying coating in our large facilities than we used to. The Ultra-Trak is an amazing floor finish system and reduces worker fatigue significantly."

Robert Neal (United States Post Office)

"Our school system loves the Fas-Trak innovations such as the Ultra-Trak Plus which now has a NEW spray system for us to combat Covid-19. We use the Ultra-Trak Plus for applying floor finish, and applying disinfectant with the spray system – it is incredible! It hold 5 gallons on board and we do that process 5 times faster than traditional methods. We are also loving the Cedar Creek Fluid mopping system with the 3 D brush for cleaning ceramic tile-edges and corners! This company has an amazing line up of innovations."

Keith McLean (Crete-Monee 201U School District)



"Solid innovative products. Using the Ultra-Trak machine has saved us time and costs. We would use 40 pails of floor finish with the mopping system and when we changed to the Ultra-Trak machine we used 20 pails instead of 40. The 3-D brush system has been a great product to use for floor striping and top scrubbing. Fas-Trak has been great to work with and we like there equipment and innovation. Highly recommended by me."

Allen Slager (Arbor Park School District #145)

"We have used the Ultra-Trak on ~600,000 sf so far on this project and I have nothing but good things to say. The user controls are very simple and effective and after dialing in the dosage rate on the first pour, our Densifier usage yield has been within 1% of intended application. Thank you for such a well-made product. Looking forward to working together in the future."

Ryan McRae (Lithko Contracting)



"For such a simple piece of equipment, Fas-Trak Industries Inc.'s Ultra-Trak offers users a lot of flexibility when it comes to applying densifiers and sealers."

Dan Baird (Floor Tech Solutions Inc.)

"The custodial staff welcomed the automated floor finishing equipment, which made the difficult task much easier. It has dramatically changed our floor care program as we have adapted to the year round school model. We also have many after school and after hour activities, which limit our timeline to conduct floor care maintenance. Due to the Fas-Trak's new found efficiencies Greenville can now scrub and recoat year round which as extended the floor life cycle."

Gregory Ince (Greenville County School District)



COATING



FAS-TRAK
Innovative Performance Solutions
WWW.FAS-TRAK.COM
MONEE, IL | 708.570.0650

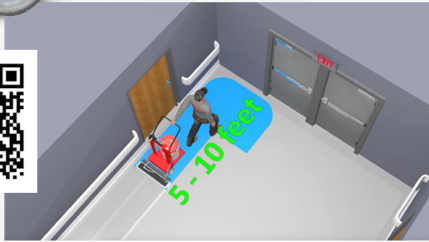
ULTRA-TRAK PLUS

6 - in - 1 Applicator System

- » Applies solvent or water-based coatings.
- » Applies sealers, floor finishes and densifiers on a variety of floors.
- » Applies mop-on maintainers and cleans lightly soiled floors.
- » All at a rate of 20,000 ft²/hr!
- » NEW: Spraying / Misting Kit.



Part No:
FT-5020 for Ultra-Trak Plus 6-in-1
Applicator Base Unit Only
Sold Separately:
FT-2817 28" Head Assembly
FT-3617 36" Head Assembly
FT-4817 48" Head Assembly
Applicator Pads (6/case):
FT-2835 28" | FT-3635 36" | FT-4835 48"



MICRO-TRAK PLUS

SINGLE-COMPONENT HIGH-SPEED APPLICATOR

NEW!

Take your floor coating to a new level with the new **MICRO-TRAK PLUS** Finish Applicator! This lightweight and highly durable unit will deliver coating speeds 3TIMES that of using a mop and bucket and will not burden you with a 'pack on your back'!

- » 16" Coating Head delivers 5000 sf² per hour;
- » 1.5 gallon removable tank delivers up to 1500 sf² per filling;
- » Comes with a setting, storing, toting or cleaning tray for drip-free operations.



CLEANING >



ALL-SURFACE FAS-VAC

Li-Ion Battery-Powered Wide Area Vacuum

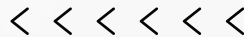
- » Cordless Freedom: no cord trip hazards, no looking for electricity outlets. Easier, faster and safer operation.
- » Vacuums large surfaces @ 25,000 ft²/hour: 8x faster than conventional methods for labor savings. Cleaning Path: 28".
- » Recovers 1.5 Bushels (14 gal). Superior dirt recovery due to top load design. 80% less time changing bags.
- » Industrial performance from a heavy-duty machine with a compact lightweight design. 38" x 31" x 16" @ only 72 lbs for unrivaled maneuverability and reduced worker fatigue.
- » Powerful design brush speed @ 2350 rpm, capable of moving 200 ft³/min of air. Brush assist drive for ease of use. 36V PMDC motor, 0.62HP, 20A Max.
- » Quiet operation @ 75 decibels, generally regarded as safe.
- » Lithium ion construction 36VDC, 15AH mated with 42V charger.
- » Charging time: 2 h (single battery) and 4 h (dual battery).
- » Run time: 1.5 hours.
- » Proudly Made in the USA.



IDEAL MARKETS >>

- | | |
|------------------------|--------------------------------|
| » Education Facilities | » Hospitals/Nursing Homes |
| » Airports | » Building Service Contractors |
| » Convention Centers | » Industrial Facilities |
| » Retail Stores | » Commercial Offices |

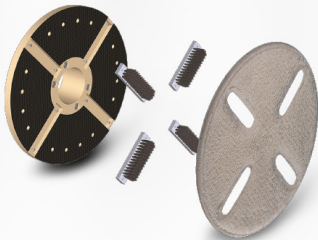
Part No:
FV-28 Fas-Vac Lithium Ion Battery Operated 28"
Wide Area ALL SURFACE Vacuum (includes unit, battery and charger)



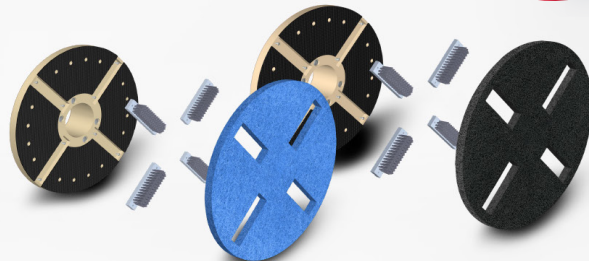
3-D BRUSH SYSTEM



**SOFT
FLOOR
CARE**



**HARD
FLOOR
CARE**



HARD OR SOFT FLOOR CARE

- » One of the best investments in labor savings, guaranteed.
- » Patented and unique combined power of bristle brushes and high quality slotted pads to cut the time for STRIPPING, SCRUBBING or BONNET CLEANING hard or soft floors.

Part No:
BL-050-17 (BLACK) Strip Brush (includes clutch, driver & 5 pads)
BL-035-17 (BLUE) 3-D Scrub Brush (includes clutch, driver & 5 pads)
BL-022-17 (BONNET) 3-D Carpet Brush (includes clutch, driver & pad)

Bonnet BUG

- » Combines a carpet spotting tool with a pressurized sprayer for applying spotting solution.



Part No.:
BB-020-00 Bonnet Bug Complete
BB-008-00 Case of 4 Bonnets.



CLEANING

**COMING
 SOON**



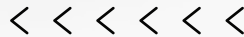
《《《 FAS-EDGE 》》》 3 - in - 1 Bi Directional Scrubber



Tired of trying to force a round buffer into a square corner? Looking for the means of quickly cleaning, scrubbing or stripping baseboards? Then this is the machine for you! This multi-surface, bi-directional 3-headed buffer-scrubber-stripper will get you tighter into corners and simultaneously work on both the floor and baseboards. Here are just a few of the features:

- » Each brush spins at 525 rpm - 3 TIMES the speed of an average buffer
- » Easily moved and carried from job to job with just 36 lbs of machine weight
- » Features at least 8 various sets of drivers that make you productive on any floor

Part No.:
 FT-7500
 (all brushes sold separately)



《《《 ULTRA-SCRUB MAX 》》》 30" DUAL INDUSTRIAL SCRUBBER

Big jobs are no problem with the **ULTRA-SCRUB MAX 30"** wide area floor machine by Fas-Trak Industries. Two 15" heads work in harmony to scrub, strip, or polish a 30" path quickly and effortlessly. Cut labor in half and still not break the budget with expensive automatic equipment. The Ultra-Scrub's unique design provides Forward Assist™, a first of it's kind in hand-held scrubbers. Get behind the Ultra-Scrub. It's just like flying.



COMING SOON!



- » Robust design for years of service.
- » Solid solution where performance results are required. 2 Times Faster!
- » No expensive isolators to replace/repair.
- » Multi-use platform - all resilient and non-resilient Floors / Carpeting
- » 11 gauge steel construction - Build Tough!
- » Large 6 gallon solution tank!
- » World class design improves use safety by the counter brush working together.
- » Outperforms oscillating "Square" units hands down with 30 inches of productivity and better results!
- » Made by Fas-Trak Industries - company leader in floor care innovations!
- » Made in Indiana with pride.



Accessories

Pad Driver A0034-DUAL - Polish Brush A0035-DUAL
 Poly Brush A0036-DUAL- Nylon Brush A0037-DUAL
 Grit Brush A0038-DUAL

Part No:
 FT-US-30 Ultra-Scrub Max Unit complete
 with 2 padholders and poly brush, polish
 brush, nylon brush and grit brushes.

FLUID 3D MOPPING SYSTEM

ONE MOP SYSTEM FOR SMOOTH & PROFILED FLOORS.

BY CEDAR CREEK.

These features create a one-of-a-kind safety story:

- » An Easy-Grip trigger for dispensing on-demand and reducing hand stress and fatigue.
- » The Power-Grip ergonomic, comfortable handle for less wrist strain in use.
- » A Ring-Bumper for securely and stresslessly pushing or carrying from place to place.
- » A wide-mouthed, removable refill bottle for easy filling and efficiency.
- » Color-coded bottles for different solutions.
- » 3D Brush Mop design cleans all surfaces especially tile grout, corners and edges.
- » The specially designed pad is also double-sided for more cleaning.



AVAILABLE ACCESSORIES

FLD-58-GN-01



CLEAN SPIN



Schools - Colleges - Retail & Business - Nursing Homes - Contract Cleaners

- » Save labor dollars - 60% faster than hand duster
- » Quick & easy clean up - rinse & reuse brush
- » Environmentally responsible
- » Speed adjustments for different cleaning tasks
- » Fewer work related injuries - no ladders or climbing hazards
- » Ergonomic, portable & lightweight
- » Use any cordless drill
- » Patented



Part No:
 CS-100 Clean Spin Cleaning/Dusting System
 4 pack (4 tools and 4 brushes)
 CS-101 6" Replacement Brush (Case of 4)



HEALTH & SAFETY >

< UV-400 >

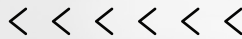


FAS-TRAK
Innovative Performance Solutions
WWW.FAS-TRAK.COM
MONEE, IL | 708.570.0650



- » Patented, FDA cleared killchamber technology, kills bacteria and reduces all types of indoor air pollution.
- » Cleans the air up to 8x per hour, utilizing 48" of hi-intensity germicidal UV-lamps, with no ozone emissions.
- » Catalytic Technology reduces odors from smoking, pets, mold and mildew, as well as harmful VOC's such as paint, varnish, formaldehyde, perfumes and nail polish remover.
- » Virtually maintenance-free, filterless technology covers spaces up to 800 ft², several times the coverage of many competing products.
- » No risks associated with the handling or discarding of contaminated or infectious filters.
- » Unit effectiveness stays constant, while most HEPA filter units lose effectiveness daily and can cause sickness if not changed at regular intervals.
- » FDA 510(K) # K062716 ETL Certified

Part No: UV-400



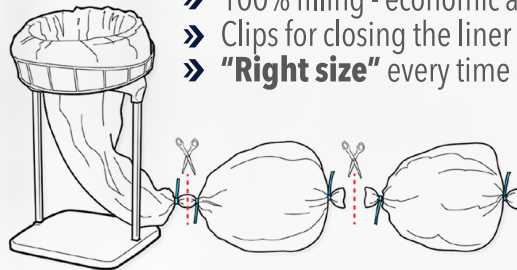
**CONSIDER THE BENEFITS
OF FAS-TRAK
INNOVATIVE SOLUTIONS!**

- » Unique 3 ply film design for high performance
- » Drop Dart ASTM D1709 certified
- » Tested and proven to outperform traditional
- » Ergonomical designed to reduce lifting stress
- » Hygienic and NO contact with various wastes
- » Visually pleasant and has tilting feature
- » Only system that is designed to address challenges of the traditional typical trash liners
- » Continuous film design that allows for better trash management
- » 100% filling - economic and environmentally friendly
- » Clips for closing the liner included with every box
- » **"Right size"** every time saves film cost and reduces waste

Mini Can

Midi Can

Maxi Can
Midi Can
Mini Can



- Save labor dollars • Quick & easy clean up
- Environmentally responsible • Precision adjustments
- Fewer work related injuries • Eliminate cross contamination
- Reduction of plastic usage & waste • Rugged construction
- Ergonomic, portable & lightweight desing



A Revolution in Sanitation and Disinfection Portability.

Add a level of cleaning, deodorizing and sanitizing power to your Fas-Trak equipment with our Chlorine Dioxide Tablets available in two sizes: HSC20 is strictly for adding to 4 gallons of water in a pail for use through your Ultra-Trak Plus Spray Wand attachment. HSC are 1 gram tablets that may be used in 3D Fluid Tools or simply to prepare 32oz spray bottles of spray cleaner, deodorizer and sanitizer. Perfect for use with ProTab Wipers.



PRO-TAB™ *The Compressed Cloth
in the Shape of a Tablet.*

Forget the pre-moistened, quick to dry out wipers that never deliver on their promises. Prepare fresh solutions of any cleaner or sanitizer you'd like and simply drop in as many ProTab wipers as you think you'll need. These compressed disks quickly hydrate and expand to create 9" x 9" durable rayon wipers that will outperform all comers for cleaning and sanitizing surfaces.

FT-ProTab_500

Reva

TOUCHLESS WIPE DISPENSER

Did you know the wipes you use are made of plastic?

REVAWIPES AREN'T

WHY Reva?

- » Uses Leed Compliant paper towel rolls
- » Hands-free operation
- » Estimated cost savings of up to 50% over traditional disinfectant wipes
- » Your choice of fluid:
 - Disinfectant • Cleaner
 - Sanitizer • And more
- » Easily refillable fluid reservoir

- » Users can choose a wet wipe or dry towel at any time
- » High-capacity towel rolls (550') and reservoir (2QT)
- » Transparent cover to view fluid levels
- » Quick and easy to replace towel roll and refill fluid reservoir
- » Powered by a rechargeable extended life battery pack, disposable batteries or a plug-in power cord
- Low battery and towel roll indicator lights

REVAWIPES ARE BETTER THAN CANISTER WIPES FOR YOUR PRACTICE OR BUSINESS

Revawipes are Better Than Canister Wipes for Your Practice or Business

- Ease of use (hands-free)
- Substantially reduced environmental impact
- Significant cost savings
- Cross contamination eliminated
- Consistent wipe saturation
- Longer service interval



SAVE AN AVERAGE OF 79% OVER CANISTER WIPERS.



UNDERSTANDING YOUR ENVIRONMENTAL IMPACT

Disinfectant wipes are made from various forms of plastic. Decomposition of these types of products is estimated between 100 and 200 years. Once decomposed, the microplastics from wipes are still left behind. Reva's LEED compliant towel rolls are manufactured from organic material with decomposition measured in weeks, not years.

COST SAVINGS

The top priorities for any business are to serve its customers well and, in turn, produce a profit. Switching from traditional canister wipes to Revawipes will decrease costs, and increase productivity.

Switch to REVA today. Reduce your footprint. Reduce your spend.





REVA WIPER

Dispenser with Towel

Cartridge with Tablets

REV001	REVA Touchless Wipe Dispenser (batteries, paper, cable and tablets not included)
REV002	REVA Wiper Roll - 6 rolls per case
REV003-16	REVA - Envirotab 1g Tablets, 50/pouch, 16 pouches per case (1 tablet per fill)
REV003-01	REVA - Envirotab 1g Tablets, 50/pouch

WIPER ROLL INSTALLATION



1. Position the roll so the tail comes over the top and down the front.
2. With your free hand, pull back gently on the left or right core pin - it is spring-loaded. Insert the pin in the wiper roll core.
3. Repeat this on the other side.
4. The tail will slip behind the bracket which is adjacent to the feeder rolls. Gently tuck the tail into the rollers.
5. Press the roller advance button to auto feed the wiper tail through the dispenser where it is ready for use.

WHAT IS THE SOLUTION CREATED BY REVA-ENVIROTAB TABLETS?

Each REVA-Envirotab 1g Tablet, when introduced into 64oz of water (the volume of the REVA cartridge) generates a 50ppm solution of Aqueous Chlorine Dioxide. This concentration delivers the oxidation capacity equivalent to 125ppm of HOCL without the same potential for damaging surfaces and has offers no significant irritation to skin at this concentration (may sting open wounds and eyes). So, you may be assured that a damp wiper made with the REVA-Envirotab Solution is completely suitable for general cleaning and sanitizing of both your hands and environmental surfaces.



ClO₂ Molecule

IN WHAT FACILITIES WILL THE REVA WIPER SYSTEM ADD VALUE?

Daycare Centers - Primary & Secondary Schools - Colleges & Universities - Office Areas & Break Rooms - Gyms & Fitness Centers
Food Service Areas - Shopping Cart Areas - Grocery Carousels - Bank Office





NEW!

SCALE AWAY

CLEANING WITHOUT CHEMICALS - WATER ONLY!

Our NEW **SCALE-AWAY** pad will quickly and easily remove soap scum build-up, mineral and lime-scale deposits from many hard surfaces. It is spectacular for removing tarnish and discoloration from stainless steel, chrome, copper and other common fixture surfaces.

Our **SCALE-AWAY** Chemical - Free Cleaning Pad is not a 'Magic Eraser', nor does it squeak and squeal like one when in use! In fact, you don't even use the white side of the pad in regular restorative cleaning applications - you use the gray layer.

This pad will quickly and easily remove soap scum build-up, mineral and lime-scale deposits from many hard surfaces. It is spectacular for removing tarnish and discoloration from stainless steel, chrome, copper and other common fixture surfaces.

Part # FT-SA-100

Simply moisten the pad or surface to be cleaned with water, then use the unique profile to clean hard, unpainted surfaces like:

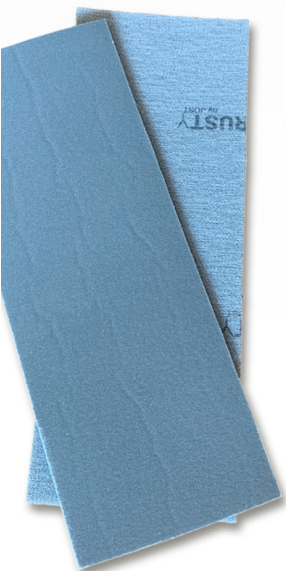
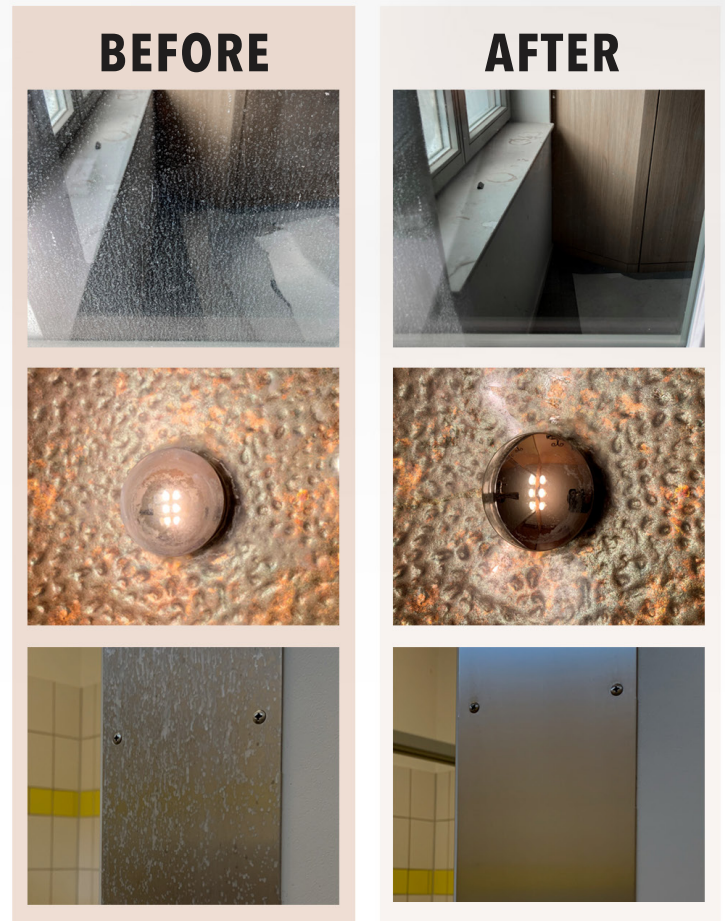
- » Glass (window glass, shower doors, etc)
- » Ceramic (tub & shower)
- » Stainless Steel (especially brushed)
- » Laminates (countertops, desktops)
- » Chrome (matte or polished)
- » Copper, Brass, Silver or Gold

SCALE AWAY

Now Available in a NEW Size!

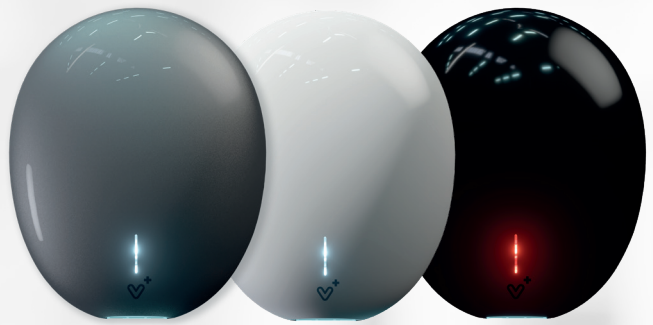
Looking for more scrubbing and cleaning surface area? Then consider our 4" x 10" **SCALE-AWAY** with a thin, Velcro backing for use on a hand or swivel holder. Great for use on larger surfaces and better for applications on curved surfaces. Like the original **SCALE-AWAY PAD**, our NEW 4 x 10 inch **SCALE-AWAY** pad will quickly and easily remove soap scum build-up, mineral and lime-scale deposits from many hard surfaces. It is spectacular for removing tarnish and discoloration from stainless steel, chrome, copper and other common fixture surfaces. This product is packed and sold 50/cs.

Part #FT-SA-410



Pebble+

REMOVES 99.9% OF BACTERIA AND VIRUSES



TUV accredited, the Pebble+ Plug & Play benefits from our Advanced Hygienic Protocol, incorporating intelligent H13 media filtration, UV-C light disinfection, and ION particle generation. UV-C sterilization is initiated when the Pebble+ is not active. The Pebble+ will automatically start to sterilize the air inside of the hand dryer as well as cleaning the local air externally to the hand dryer. Any bacteria and viruses within the H13 filter are also disinfected. In addition, negative IONS are produced to clear particulates from the surrounding air, allowing better air quality within the local environment. This protocol allows for 24/7 protection.

- Local Air Sterilization
- UV Light Disinfection
- Ion Generation
- Low Carbon Engine
- Quiet Mode
- H13 Media iFilter
- IONPURE Antimicrobial Dryer Cover
- Digital Motor
- Plug & Play®
- Terra4 Docking Station® compatible

DRYER VS PAPER COSTS

» Cost of annual energy usage: \$26.00 against a paper towel cost of \$450.00. A saving of \$424 = 94%*

» Recommended usage: Medium and High



* Calculated at KW/H rate 18¢ at drying rates of 150 dries per day, for 252 days per year, in standard mode with heat.
** 5 year no quibble warranty. All figures quoted were correct at the time of printing.

TECHNICAL SPECIFICATION

Voltage	120v /60Hz
Rated Power	820w
Rated Power (Quiet Mode)	130w
Net Weight	6.17 lbs
D x W x H	5.5" x 10.5" x 12.5"
Noise level (Quiet Mode)	67dB at 1m
Noise level (Standard)	72dB at 1m
Cover material	Fireproof 94V0, ABS
Airflow	215 mph
Airflow (Quiet Mode)	145 mph

ELECTRICAL SPECIFICATION

Rated Current	4.0A
Motor Speed	30,000RPM
Sensing Distance	6"-10"
Standby Power Consumption	≤ 0.5w

SAFETY FEATURES

Motor Protection
Thermal Element protection



Terra4

DOCKING STATION®

OUR TERRA4 DOCKING STATION® IS THE WORLD'S FIRST MULTI-DRYER PLUG & PLAY® PLATFORM.

Once installed, the Terra4 Docking Station® becomes the fit and forget product, allowing for any of our Plug & Play® hand dryers to be easily installed, upgraded, or replaced, within seconds, by anyone; no skilled labour required. Managing your hand dryer requirements has never been so easy



Terra4 Docking Station® included

"I've been in the industry for 25 years and I'd say that the Plug & Play® dryers are probably the most innovative, practical and stylish dryers I've seen in this time."



FAS-TRAK
Innovative Performance Solutions
WWW.FAS-TRAK.COM
MONEE, IL | 708.570.0650



- Easy Fit
- Plug & Play®
- Compact
- Robust
- Multi Product Feature
- Terra4 Docking Station®

FAS-TRAK *WE BELIEVE IN...*

TRUST

Fas-Trak Industries has been in business for over 20 years and have served thousands of schools - colleges - universities - BSCs - Government agencies - ISP - concrete contractors - general contractors worldwide and would love to earn your business.

> > > > > >

INNOVATION

We understand that cleaning and coating are very labor-intensive tasks, making labor generally 90% of your application cost. We have dedicated our company to the most innovative means of reducing that cost with durable equipment that will often CUT those labor cost by more than HALF, job after job.

< < < < < <

AMERICAN MADE PRODUCTS

100% of our core and heritage products, and over 90% of our remaining items have been designed and manufactured right here in the United States of America.

> > > > > >

TRAINING THAT MATTERS

Fas-Trak Industries is not reseller, we have a vested interest in ensuring that each and every one of our products are properly employed by trained cleaning and coating professionals. This is why you will find so many videos on our YouTube Channel. And when a video is not quite 'cutting it' you may call and schedule a video chat, or for large organizations, and on-site training presentation.

< < < < < <

SERVICE AFTER THE SALE

Many of our core items come with tremendous warranties, and parts are always in-stock and generally shipped next day. If at any time, you feel that a part has not performed to your complete satisfaction, please get in touch with us immediately by phone or by email and let us know what you need. We are committed to your full satisfaction.